

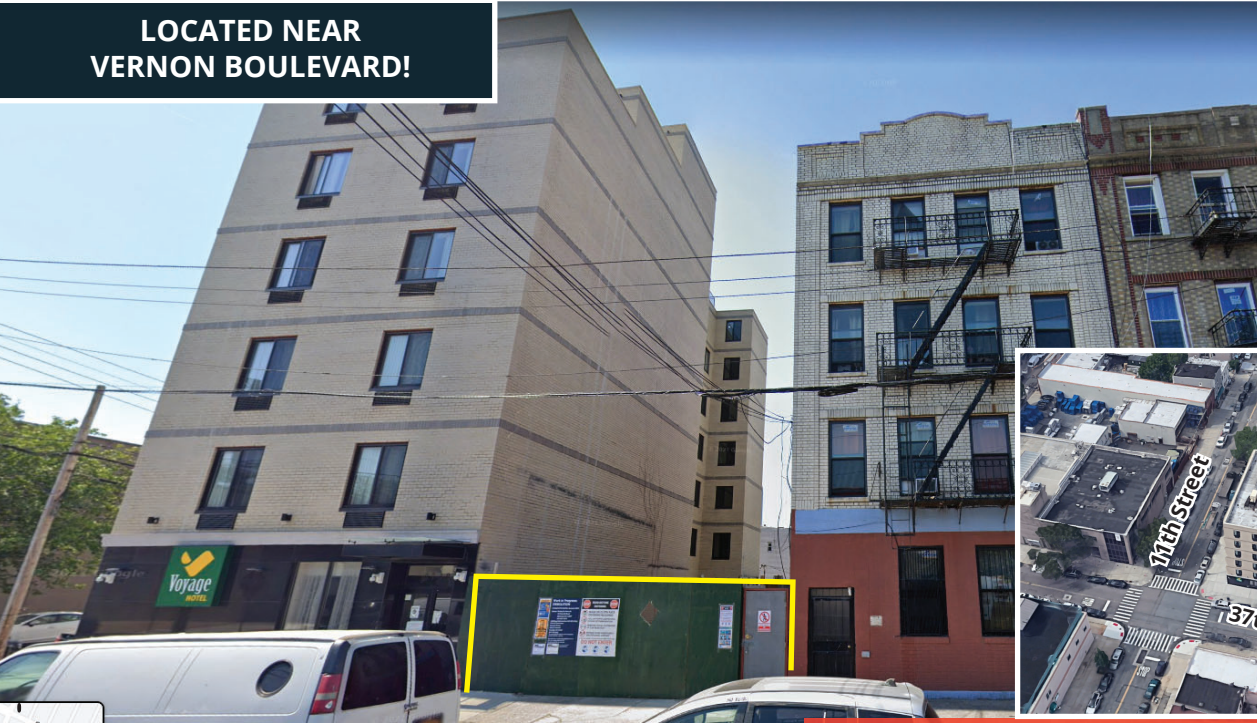
EXCLUSIVE

EXTREMELY RARE LAND FOR LEASE **LOCATED IN LONG ISLAND CITY!**

10-16 37TH AVENUE | LONG ISLAND CITY, NY

**LOCATED NEAR
VERNON BOULEVARD!**

GRAVELED LOT



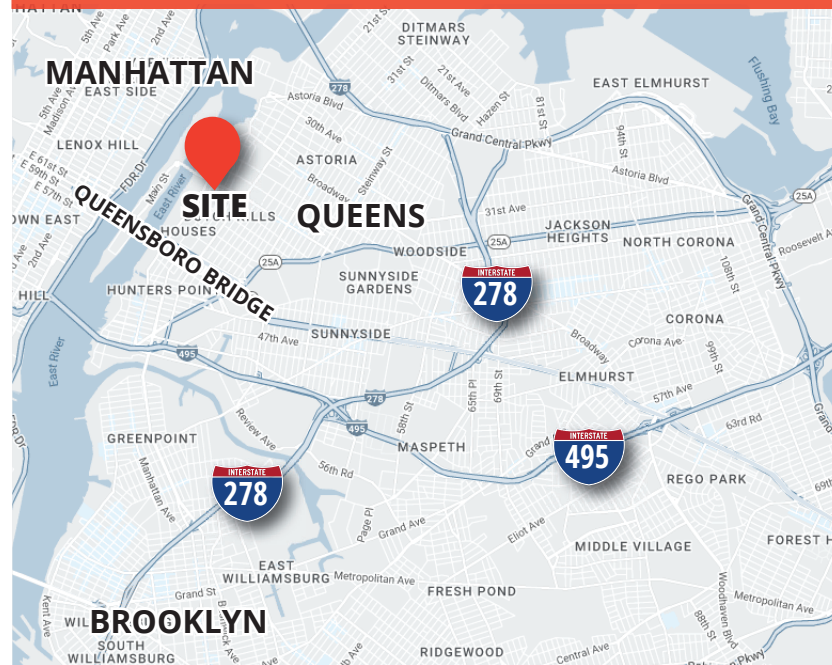
FEATURES:

- **2,521 SF LOT**
- **PERFECT EQUIPMENT OR VEHICLE STORAGE**
- **AVAILABLE IMMEDIATELY**
- **100' DEEP X 25' WIDE LOT**
- **ZONED M1-3**

ACCESS:

- **MINUTES TO**  
- **WALK TO**  

**MINUTES FROM QUEENSBORO BRIDGE
MINUTES TO MANHATTAN!**



CONTACT EXCLUSIVE AGENT:

EITAN HAKAMI

(917) 716-7751 (CELL)

ehakami@greiner-maltz.com

GREINER-MALTZ
REAL ESTATE

Creating Opportunities Together

WWW.GREINER-MALTZ.COM

Any information set forth herein has been obtained from sources deemed reliable, however, we have not verified it, and make no representation or warranty of any kind, including without limitation: condition: either latent or patent, size or manner of construction of the property, compliance with local law, and environmental conditions. All information submitted herein is subject to errors and omissions, and the right of our principal(s), to withdraw, modify, or condition the listing with-out prior notice. Broker cooperation encouraged.